

The CH BULK series of liquid helium dewars have been designed to meet the exacting requirements of ultra-low temperature applications in research and industry.


The larger capacity liquid helium vessels are commonly used in conjunction with liquefiers, or where the bulk storage of product is required. Vessels up to 20,000 litres are available.


Custom ladder location and instrument panel location can be supplied as an option.

	CH 1000	CH 2000	CH 3000	CH 4000	CH 5000	CH 6000	CH 7000	CH 10,000	CH 15,000	CH 20,000
Product Code	9917-1000-0	9917-2000-0	9917-3000-0	9917-4000-0	9917-5000-0	9917-6000-0	9917-7000-0	9917-10000-0	9917-8500-0	9917-20000-0
Capacity (litres)	1000	2000	3000	4000	5000	6000	7000	10,000	15,000	20,000
Diameter (mm)	1400	1700	1900	2000	2300	2300	2400	2650	3000	3300
Height (mm)*	1636	2003	2245	2599	2587	2838	2978	3408	3832	4092
Weight Empty (kg)	650	950	1150	1250	1350	1650	1750	1950	5000	7100
Weight Full (kg)	770	1200	1525	1690	1850	2275	2500	2825	6250	9600
Max Allowable Working Pressure (bar G)	2.0	2.0	2.0	2.0	2.0	2.0	2.0	2.0	2.0	2.0
Static Evaporation Rate (% per day)**	0.5	0.4	0.35	0.35	0.3	0.3	0.25	0.25	0.2	0.2
Neck Diameter Standard (mm)	100	140	160	160	160	160	200	200	305	305


\* Measured from floor to top of contents gauge \*\* Measured at atmospheric pressure


### CH FEATURES


Brushed or painted finish available 


Ladder, platform & gate assemblies available for larger versions 

Helium level meters/controllers/heaters available as an option 

Intermediate capacities available on request 

Stainless steel construction 

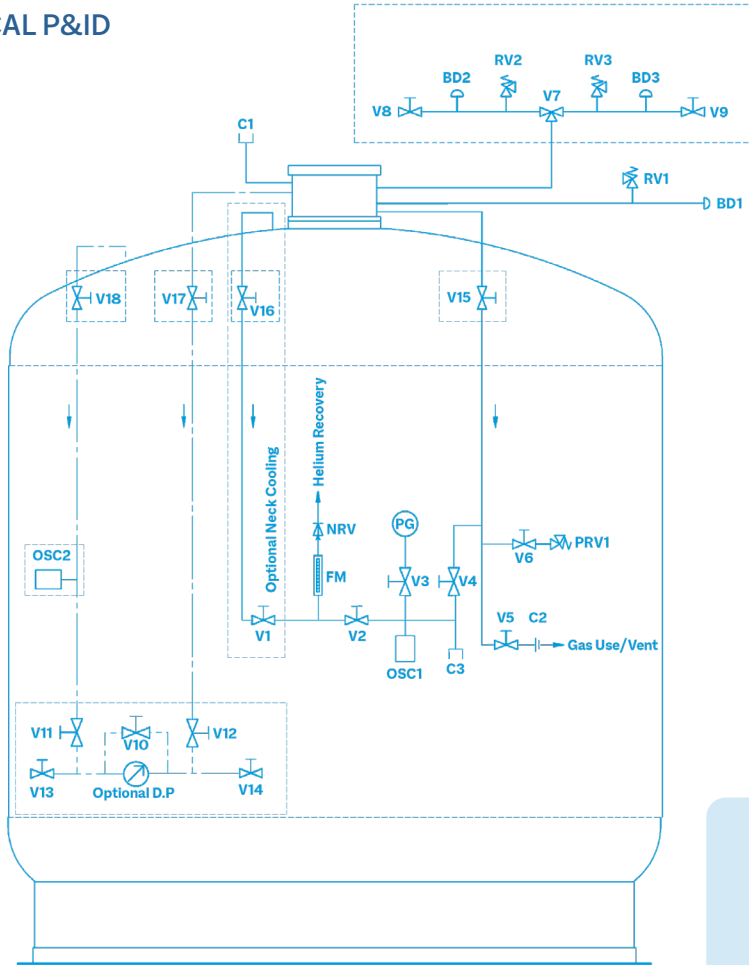
Mounted on skirt with optional fork lift pockets 

Wide choice of neck configurations and siphon entry ports 

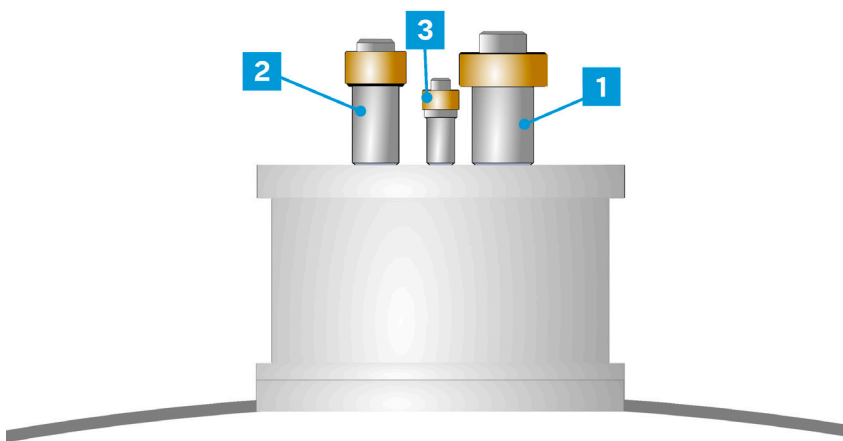


**VALVES/PIPEWORK**

TYPICAL P&ID



TYPICAL SIPHON GLAND ARRANGEMENT



TYPICAL SIPHON GLAND ARRANGEMENT	
1	Liquefier connection
2	Transfer siphon
3	Probe

VALVES/ PIPEWORK (LIN, LOX, LAR)	
PG	Pressure gauge
FM	Flow meter
OSC1	Oscillation control damper
OSC2	Oscillation control damper
DP	Differential pressure transmitter
RV1, RV2, RV3	Relief valve
PRV1	Pressure regulating vent valve
BD1, BD2, BD3	Burst disc
NRV	Non return valve
V1	Neck cooling valve
V2	Flow meter control valve
V3	Pressure gauge isolation
V4	Gas feed to panel isolation valve
V5	Manual gas use valve
V6	Manual pressure regulating isolation valve
V7	Divertor valve
V8, V9	Bleed off valve
V10	Differential pressure gauge equalising valve
V11	Differential pressure gauge equalising valve (high pressure)
V12	Differential pressure gauge equalising valve (low pressure)
V13	Spare differential pressure gauge equalising valve (high pressure)
V14	Spare differential pressure gauge equalising valve (low pressure)
V15, V16, V17, V18	Optional isolation valve
C1	Spare connection
C2	KF25 half nipple
C3	Spare connection

