

Wessington's Wellmite series of tanks are classified as T75 UN Portable tanks under the rules of ADR and IMDG. Wellmites are designed, manufactured and tested for storing and transporting liquid nitrogen by road, sea and from supply vessel to offshore platform.

The Wellmite consists of a cryogenic tank and associated pipe work and valves protected by a robust frame manufactured and certified to meet the requirements of DNV 2.7-1 and EN12079. Handling is by either forklift pockets or by slings attached to the frame pad eyes.

The tank has been designed for use in all areas of onshore & offshore operation where there is a limitation on floor space and a restriction in crane lifting capacity.

The tanks can be produced with working pressures of 60 psig through to 250 psig. ASME versions available.


The Wellmite also features high vacuum super-insulation, full set of decals (including logo's where provided by the customer), pressure build system and various pipe work options for maximum versatility.


MATERIALS	SPECIFICATION
Inner Shell	Stainless steel
Outer Jacket	Carbon steel (optional - stainless steel)
Skid	Carbon steel (optional - stainless steel)
Pipework	Tp. 316 stainless steel sch.10
Paint Specification	Shot blast SA 2.5, zinc rich primer 50 microns, epoxy high build 125 microns, polyurethane top coat 50 microns. Standard colour: white Custom paint colours on request
Design Approvals (s)*	EN 13530, ADR / RID, IMDG, IMO, UKDOT, DNV2.7-1, EN12079, optional ASME U/CFR stamped at lower pressures on request
Temperature	Inner shell -196°C to +50°C, outer jacket -20°C to +50°C
NER	0.5% per day
Corner Castings	Not applicable
Couplings	NT150 as standard, custom specific couplings on request
Roof Plates	Aluminium (durbar on request)
Drip Tray	Stainless steel
Earth Point	Stainless steel M12 boss
Vaporiser	Stainless steel finned tubing
Slings	Slings and shackles (where supplied) - approved to all relevant codes including DNV 2.7-1
Insulation	Vacuum and super insulation


* Design approvals may vary depending on options and country of operation. For details, please contact Technical Department



WELLMITE FEATURES

Lower roof plate to allow stacking with slings/shackles remaining in situ 

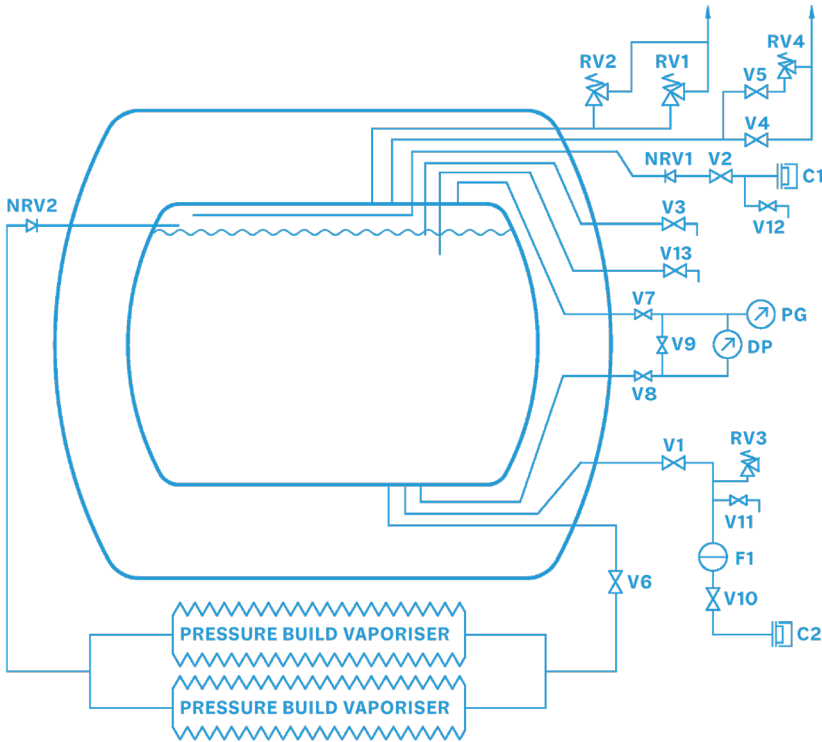
Dual trycock valves 

Fully welded frame or optional removable frame 

Optional Hasting vacuum check valve 



VALVES/PIPEWORK



VALVES/ PIPEWORK (LIN, LOX, LAR)

V1	Liquid isolation valve
V2	Liquid top fill valve
V3	Trycock 95%
V4	Gas vent valve
V5	Road valve
V6	Pressure build valve
V7	DP gauge low pressure line
V8	DP gauge high pressure line
V9	DP gauge equalising valve
V10	Liquid decant/fill valve
V11	Line blow down valve
V12	Line blow down valve
V13	84% trycock
F1	Strainer
PG	Pressure gauge
DP	Differential contents gauge
C1	ACME 150 connection
C2	ACME 150 connection
RV1	Primary relief valve 6 bar
RV2	Primary relief valve 6 bar
RV3	Line relief valve 235 psi
RV4	Road relief valve 1.9 bar
NRV1	Non return valve
NRV2	Non return valve

SPECIFICATION	WELLMITE 500 - 6 BAR	WELLMITE 1000 - 4 BAR ASME	WELLMITE 1000 - 6 BAR	WELLMITE 1000 - 17 BAR
Product Code	9950-9000	9955-0010	9955-0000	9955-0020
Capacity	1950	3176	3176	3176
Pressure	6 Bar	4 Bar	6 Bar	17 Bar
Tare Weight	1500kg	2850kg	2850kg	3200kg
Max Gross Weight	3000kg	6000kg	6000kg	6000kg
Length (mm)	1750	2438	2438	2438
Width (mm)	1750	2438	2438	2438
Height (mm)	2510	2175	2175	2175

