

The ISO VAC 20 tank has been designed as a standard 20ft ISO container for the safe storage and transport of refrigerated liquified air gases. A frame arrangement with Blair corner castings and lockable valve protection cabinets containing the valves, gauges, vacuum check gauge connection and a separate document holder.

The ISO VAC 20 air gas range of tanks can be produced with working pressures ranging from 3 bar to 24 bar and can be used for the transport of LIN, LOX and LAR. Other tank options include LNG, Ethylene, Ethane and CO₂.


This tank has approvals for road, rail and sea transport. It can also be configured to accept cryogenic transfer pumps.

The ISO VAC also features high vacuum super-insulation, stacking capability 9 units high to ISO 1496-3 (192,000kg max), full set of decals (including logos where supplied by customer), integral pressure building system, document holder and various pipe work and valve options to offer maximum versatility to end user and operator.

MATERIALS	SPECIFICATION
Inner Shell	Stainless steel
Outer Jacket	Carbon steel (optional - stainless steel)
Skid	Carbon steel (optional - stainless steel)
Pipework	Tp. 316 stainless steel sch.10
Paint Specification	Shot blast SA 316, zinc rich primer 50 microns, Epoxy high build 125 microns, polyurethane top coat 50 microns Standard colour: white Custom paint specification on request
Design Approvals (s)*	EN 13530, ADR / RID, IMDG, IMO, CSC, Option - ASME'U' / CFR
Temperature	Inner shell -196°C to +50°C, outer jacket -20°C to +50°C (option -40°C to +50°C) material
NER	<0.4% per day
Corner Castings	ISO standard 1161 blair BLRC20100 / 20000
Couplings	Blind flanges as standard. Custom specification on request.

* Design approvals may vary depending on options and country of operation. For details, please contact Technical Department

ISOVAC 20 FEATURES

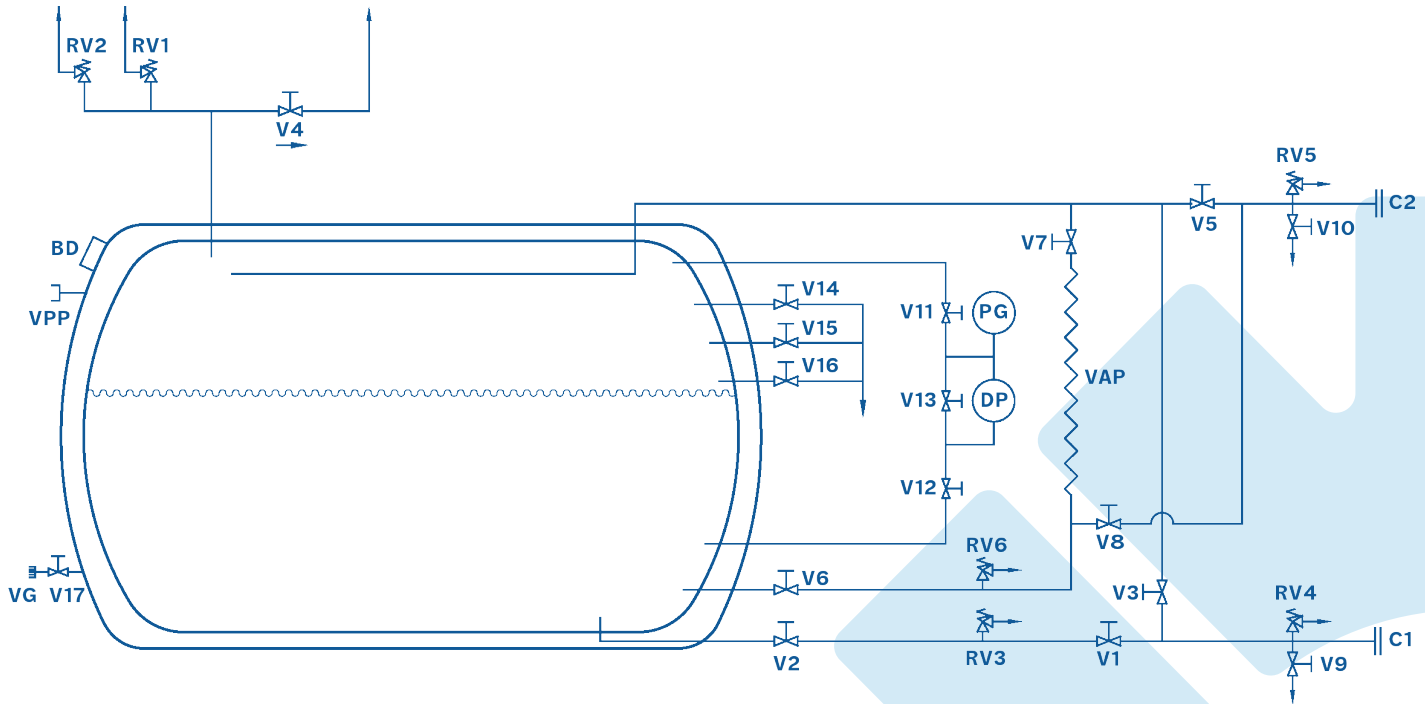
Custom paint specification/two-tone colour scheme available on request 

Optional Hasting vacuum check valve 

Dual trycock valves 



VALVES/PIPEWORK



VALVES/ PIPEWORK (LIN, LOX, LAR)

REF	DESCRIPTION	SIZE	REF	DESCRIPTION	SIZE
V1	Bottom fill/decant valve	2" NB	V17	Vacuum gauge isolation valve	1/8"
V2	Bottom liquid isolation valve	2" NB	DP	Differential pressure gauge	-
V3	Top fill valve	1 1/2" NB	PG	Pressure gauge	-
V4	Vent valve	2" NB	C1	Liquid fill/decant connection	2" NB
V5	Pump recirculation valve	1 1/2" NB	C2	Pump recirculation connection	2" NB
V6	Pressure build valve	1" NB	VAP	Pressure build vaporiser	-
V7	Pressure build isolation valve	1 1/2" NB	VPP	Vacuum pumping port	NW 40 KF
V8	Vaporiser force feed valve	1/2" NB	BD	Vacuum jacket blow off disc	-
V9	Fill line blow down valve	1/2" NB	VG	Vacuum gauge	-
V10	Recirculation line blow down valve	1/2" NB	RV1	Primary relief valve	1" X 1 1/4"
V11	Low pressure valve to gauges	-	RV2	Primary relief valve	1" X 1 1/4"
V12	High pressure valve to gauges	-	RV3	Liquid line relief valve	1/4"
V13	DP gauge equalising valve	-	RV4	Fill line relief valve	1/4"
V14	Try-cock valve - 95% full	1/2" NB	RV5	Recirculation line relief valve	1/4"
V15	Try-cock valve - argon/oxygen 74%	1/2" NB	RV6	Pressure build line relief valve	1/4"
V16	Try-cock valve - nitrogen 66%	1/2" NB			

SPECIFICATION	ISO VAC 20 17 Bar	ISO VAC 20 24 Bar
Product Code	9951-1100	9951-1205
Capacity	20,000 ltr	20,000 ltr
Pressure	17 Bar.g, 250psi.g	24 Bar.g, 350psi.g
Tare Weight (kg)	8085	9075
Stacking (kg)	192,000	192,000

