

The LGT BULK series of medium pressure industrial tanks are suitable for the bulk storage of liquid nitrogen, argon or oxygen for gaseous supply applications.




The LGT Bulk range has been designed with a small footprint to give maximum storage capacity for the minimum ground area.

All vessels incorporate dual relief valves with changeover for extra versatility and full pressure building circuitry. High quality extended spindle valves fitted as standard.

	LG 3,000	LGT 6,000	LGT 9,000	LGT 12,000	LGT 17,000	LGT 20,000	LGT 21,000	LGT 27,000	LGT 28,000
Capacity (litres)	3,300	6,000	8,800	12,300	17,600	20,000	21,000	26,700	28,200
Capacity - 95% (litres)	3,135	5,700	8,360	11,685	16,720	19,190	25,365	19,950	26,790
Diameter (mm)	1,597	1,597	1,597	2,234	2,234	2,234	2,800	2,234	2,800
Height (mm)	4,220	6,210	9,210	5,450	7,450	8,450	6,590	11,450	8,590
Depth (mm)	1,850	1,850	1,850	2,500	2,500	2,500	2,800	2,500	2,800
Weight Empty (kg)	2,275	3,345	4,715	4,995	6,600	7,415	9,630	7,215	9,205
Maximum Allowable Working Pressure (bar G)	17	17	17	17	17	17	17	17	17
Nominal Static Evaporation Rate LOX % Per Day*	0.45	0.35	0.30	0.25	0.25	0.23	0.20	0.23	0.20
Nominal Flow LOX (Nm ³ /Hr)	300	300	300	600	600	600	600	600	600







* Measured at atmospheric pressure

LGT FEATURES

-  Stainless steel inner vessel and all pipework
-  Robust industrial design
-  Differential pressure contents gauge fitted as standard on tanks over 2000 litres.

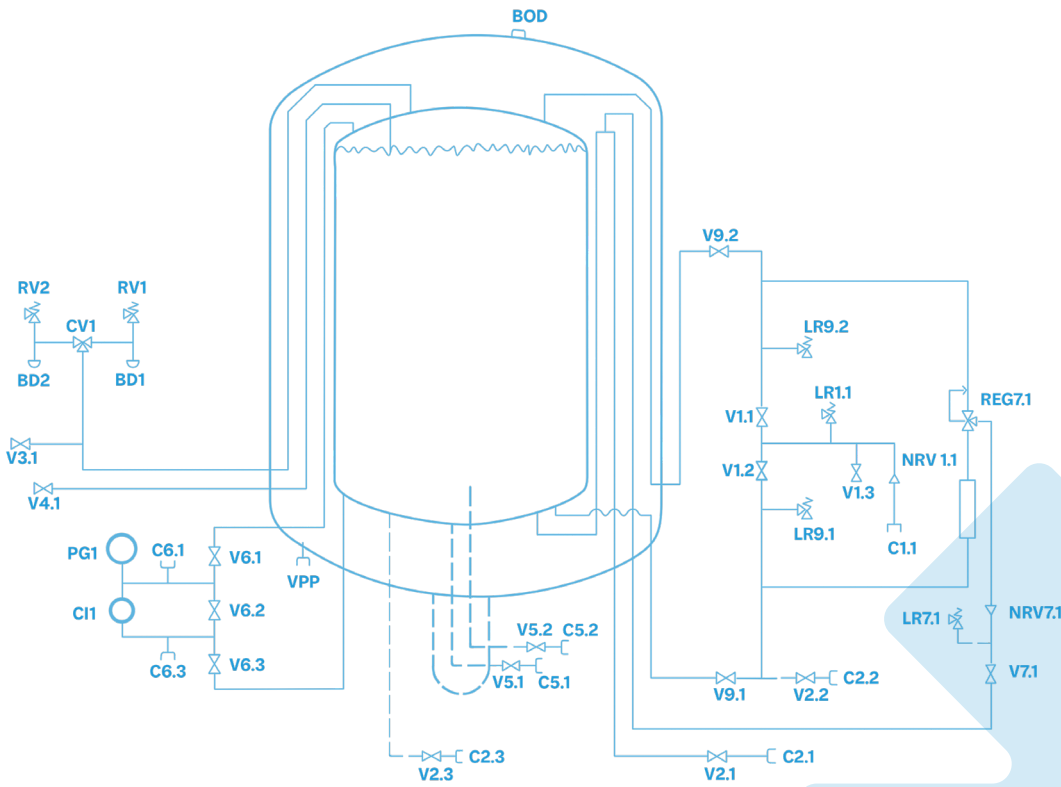


LGT FEATURES

- High quality extended spindle valves fitted on tanks over 2000 litres 
- Efficient external pressure build system 
- Readily accessible safety relief valves and changeover valve 
- Design code P.E.D 
- Crane lifting eyes 
- Non-European approvals available upon request 



VALVES/PIPEWORK



**VALVES/ PIPEWORK
(LIN, LOX, LAR)**

V1	Top fill valve	RV1	Primary relief valve
V2	Bottom fill valve	RV2	Primary relief valve
V3	Gas isolation valve	RV3	Line relief valve
V4	Liquid isolation valve	RV4	Line relief valve
V5	Liquid decant valve	RV5	Line relief valve
V6	External vaporiser supply valve	BD1	Burst disc
V7	95% try-cock valve	BD2	Burst disc
V8	Gas vent valve	PG	Pressure gauge
V9	Safety device diverter valve	DP	Differential pressure gauge
V10	Low pressure instrumentation valve	C1	Fill connection
V11	Equalising instrumentation valve	C2	Liquid decant connection
V12	High pressure instrumentation valve	C3	External vaporiser connection
V13	Fill cluster blow down valve	BOD	Vacuum jacket blow off disc
NRV1	Fill cluster non-return valve	VPP	Vacuum pumping port
NRV2	Economiser non-return valve	VAP	Vessel pressure build vaporiser
R1	Economiser regulator		

