

The LGT series of self-pressurising cryogenic cylinders has been designed to efficiently store product in it's liquid state and provide a regulated stream of gas.

Each LGT vessel automatically maintains pressure at a pre-set level using the integral pressure building circuit.







**LGT FEATURES**

-  Medium (16 Bar) and high pressure (23.5 Bar) models available
-  Top and bottom liquid fill valves for maximum versatility
-  Automatic pressure building and economiser circuit entry ports

	LGT-120MP	LGT-120HP	LGT-160MP	LGT-160HP	LGT-200MP	LGT-200HP	LGT-240MP	LGT-240HP	LGT-400MP	LGT-400HP
Capacity (litres)	120	120	160	160	200	200	240	240	400	400
Diameter (mm)	502	502	507	507	507	507	690	690	770	770
Height (mm)*	1308	1308	1578	1578	1768	1768	1469	1469	1646	1646
Weight Empty (kg)	100	112	115	131	130	148	180	200	290	320
Weight Full (kg)	196	208	244	260	292	310	374	394	613	643
Max Working Pressure (bar G)	16.2	23.5	16.2	23.5	16.2	23.5	16.2	23.5	16.2	23.5
Regulator Set Point (bar)	8.5	20	8.5	20	8.5	20	8.5	20	8.5	20
Gaseous Withdrawal Rate (m3/hr N2)	10.5	10.5	10.5	10.5	10.5	10.5	10.5	10.5	10.5	10.5
Static Evaporation Rate (% per day)**	2.6	2.6	2.4	2.4	1.8	1.8	1.7	1.7	1.5	1.5

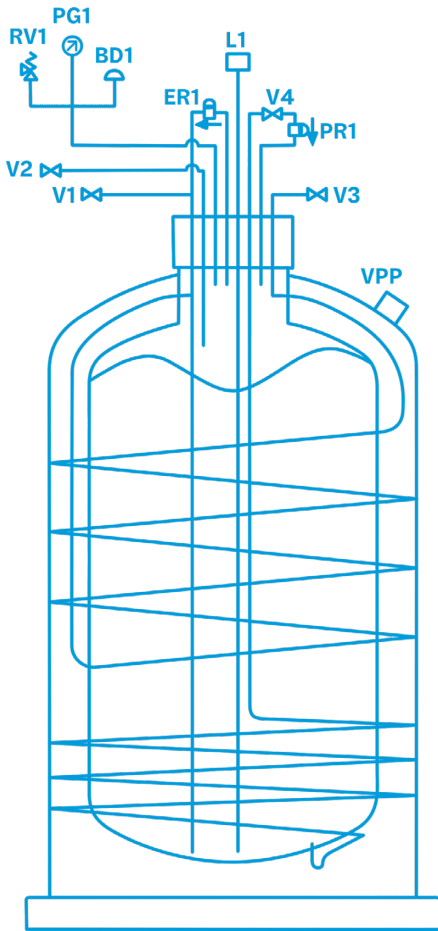
\* Measured from floor to top of contents gauge  
\*\* Measured at atmospheric pressure



- LGT-240 Mounted on flat base with high quality castors (2 with footbrake) 
- LGT-400+ Mounted on pallet base 
- Oxygen & CO2 versions available 
- Electronic contents gauge included 
- Tricock to prevent overfilling 
- Valve protection ring handle 



**VALVES/PIPEWORK**



VALVES/ PIPEWORK (LIN, LOX, LAR)	
V1	Liquid bottom fill/decant
V2	Gas vent / try-cock
V3	Gas use
V4	Pressure build valve
VPP	Vacuum pumping port
RV1	Relief valve
BD1	Burst disc
PR1	Pressure regulator
ER1	Economiser regulator
L1	Level indicator
PG1	Pressure gauge

