



The LGT Series of self-pressurising cryogenic cylinders are designed to efficiently store product in its liquid state and provide a regulated stream of gas.

Each LGT vessel automatically maintains pressure at a pre-set level using the integral pressure building circuit.

	LGT- 240MP	LGT- 240HP	LGT- 400MP	LGT- 400HP
Capacity (litres)	240	240	400	400
Diameter (mm)	690	690	770	770
Height (mm)*	1469	1469	1646	1646
Weight Empty (kg)	180	200	290	320
Weight Full (kg)	374	394	613	643
Max Working Pressure (bar G)	16.2	23.5	16.2	23.5
Regulator Set Point (bar)	8.5	20	8.5	20
Gaseous Withdrawal Rate (m3/hr N2)	10.5	10.5	10.5	10.5
Static Evaporation Rate (% per day)**	1.7	1.7	1.5	1.5


## LGT FEATURES


 Medium (16 Bar) and high pressure (23.5 Bar) models available

 Automatic pressure building and economiser circuit entry ports


\* Measured from floor to top of contents gauge  
 \*\* Measured at atmospheric pressure




LGT-240 Mounted on flat base with high quality castors (2 with footbrake) 

LGT-400+ Mounted on pallet base 

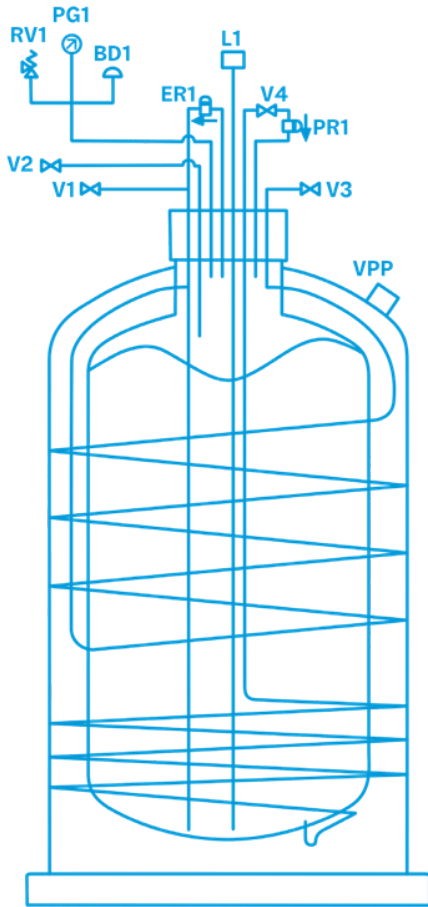
Nitrogen, Oxygen, Argon & CO2 versions available 

Electronic contents gauge included 

Try cock to prevent overfilling 

Valve protection ring handle 

**VALVES/PIPEWORK**



*Also available in 1,000-litre and 2,000-litre pallet-based configurations.*

VALVES/ PIPEWORK (LIN, LOX, LAR)	
V1	Liquid bottom fill/decant
V2	Gas vent / try-cock
V3	Gas use
V4	Pressure build valve
VPP	Vacuum pumping port
RV1	Relief valve
BD1	Burst disc
PR1	Pressure regulator
ER1	Economiser regulator
L1	Level indicator
PG1	Pressure gauge