

The ISO VAC 20 LNG tank has been designed as a standard 20ft ISO container for the safe storage and transport of liquefied natural gases. A frame arrangement with Blair corner castings and lockable valve protection cabinets containing the valves, gauges, vacuum check gauge connection and a separate document holder.

The ISO VAC 20 LNG tank can be produced with working pressures ranging from 3 bar to 24 bar and can be used for the transport of LNG, Ethylene and Ethane. Other tank options include LIN, LOX, LAR and CO₂.


This tank has approvals for road, rail and sea transport. It can also be configured to accept cryogenic transfer pumps.

The ISO VAC LNG also features high vacuum super-insulation, stacking capability 9 units high to ISO 1496-3 (192,000kg max), full set of decals (including logos where supplied by customer), integral pressure building system, document holder and various pipe work and valve options to offer maximum versatility to end user and operator.

MATERIALS	SPECIFICATION
Inner Shell	Stainless steel
Outer Jacket	Carbon steel (optional - stainless steel)
Skid	Carbon steel (optional - stainless steel)
Pipework	Tp. 316 stainless steel sch.10
Paint Specification	Shot blast SA 316, zinc rich primer 50 microns, Epoxy high build 125 microns, polyurethane top coat 50 microns. Standard colour: white. Custom paint specification on request.
Design Approvals (s)*	EN 13530, ADR / RID, IMDG, TIR, CSC, ISO 1496, Option - ASME'U' / CFR
Temperature	Inner shell -196°C to +50°C, outer jacket -20°C to +50°C (option -40°C to +50°C) material
NER	0.4% per day
Corner Castings	ISO standard 1161 blair BLRC20100 / 20000
Couplings	Blind flanges as standard. Custom specification on request.

** Design approvals may vary depending on options and country of operation. For details, please contact Technical Department*

ISOVAC 20 FEATURES

Custom paint specification/two-tone colour scheme available on request 

Optional Hasting vacuum check valve 

Dual trycock valves 



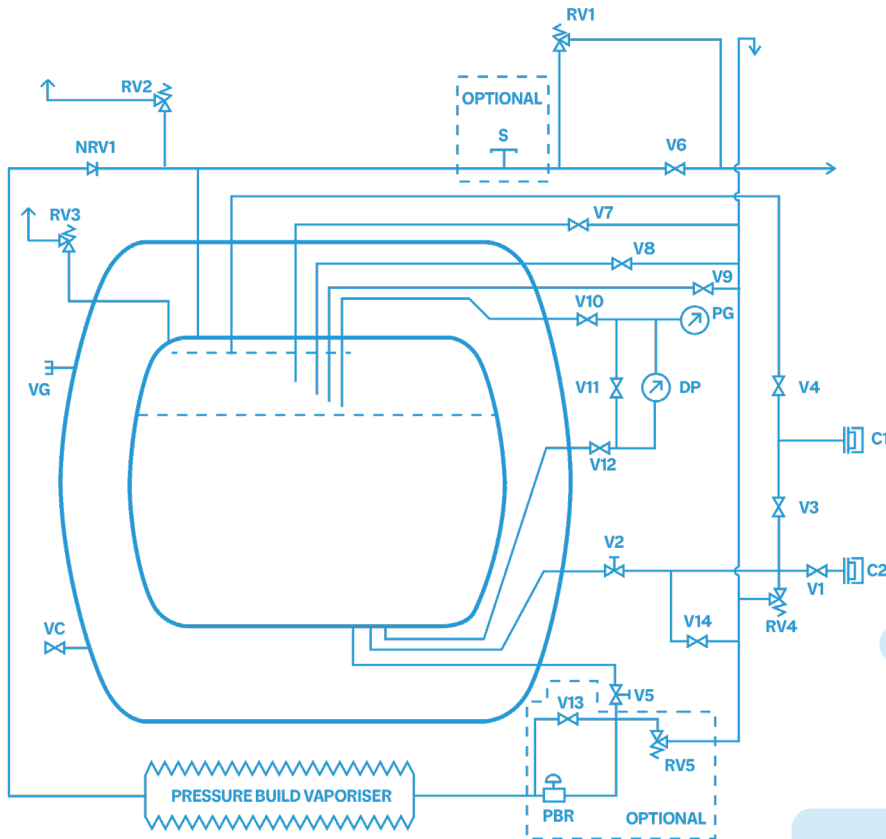
Wessington Cryogenics Ltd

2 Gadwall Road, Rainton Bridge South

Houghton-Le-Spring, Tyne & Wear, England DH4 5NL

Tel: +44 (0)191 512 0677 Email: sales@wessingtoncryogenics.com

VALVES/PIPEWORK



VALVES/ PIPEWORK (LIN, LOX, LAR)	
V1	Liquid decant
V2	Liquid isolation - air actuated
V3	Bottom liquid fill
V4	Top liquid fill
V5	Pressure build valve - air actuated
V6	Gas vent valve
V7	Try-ock 1
V8	Try-cock 2
V9	Try-cock 3
V10	Gauge panel control valves
V11	Gauge panel control valves
V12	Gauge panel control valves
V13	Pressure build regulator bypass
V14	Manual line blow down
PBR	Pressure build regulator
RV1	Primary relief valves
RV2	Primary relief valves
RV3	Primary relief valves
RV4	Line relief valves
RV5	Line relief valves
NRV1	Non-return valves
C1	Couplings to customer requirements
C2	Couplings to customer requirements
S	Sample point (optional)
PG	Pressure gauge
DP	Differential contents gauge
VC	Vacuum pumping port
VG	Vacuum gauge

SPECIFICATION	ISO VAC 20 LNG 17 Bar	ISO VAC 20 LNG 24 Bar
Product Code	9951-1110	9951-1215
Gross Capacity	20,000 ltr	20,000 ltr
Net Capacity	19,000 @ 95%	19,000 @ 95%
Pressure	17 Bar	24 Bar
Tare Weight (kg)	8085	9075
Stacking (kg)	192,000	192,000

