

The ISO VAC 20 LNG tank has been designed as a standard 20ft ISO container for the safe storage and transport of liquefied natural gases. A frame arrangement with Blair corner castings and lockable valve protection cabinets containing the valves, gauges, vacuum check gauge connection and a separate document holder.

The ISO VAC 20 LNG tank can be produced with working pressures ranging from 3 bar to 24 bar and can be used for the transport of LNG, Ethylene and Ethane. Other tank options include LIN, LOX, LAR and CO2.


This tank has approvals for road, rail and sea transport. It can also be configured to accept cryogenic transfer pumps.


The ISO VAC LNG also features high vacuum super-insulation, stacking capability 9 units high to ISO 1496-3 (192,000kg max), full set of decals (including logos where supplied by customer), integral pressure building system, document holder and various pipe work and valve options to offer maximum versatility to end user and operator.


MATERIALS	SPECIFICATION
Inner Shell	Stainless steel
Outer Jacket	Carbon steel (optional - stainless steel)
Skid	Carbon steel (optional - stainless steel)
Pipework	Tp. 316 stainless steel sch.10
Paint Specification	Shot blast SA 316, zinc primer 50 microns, Epoxy high build 125 microns, polyurethane top coat 50 microns Standard colour: white Custom paint specification on request
Design Approvals (s)*	ASME'U'/ EN 13530 ADR, RID, IMDG, IMO, CSC,
Temperature	Inner shell -196OC to +50OC, outer jacket -20OC to +50OC (option -40OC to +50OC) material
NER	0.4% per day
Corner Castings	ISO standard 1161 blair BLRC20100 / 20000
Couplings	Blind flanges as standard. Custom specification on request.

** Design approvals may vary depending on options and country of operation.
For details, please contact Technical Department*

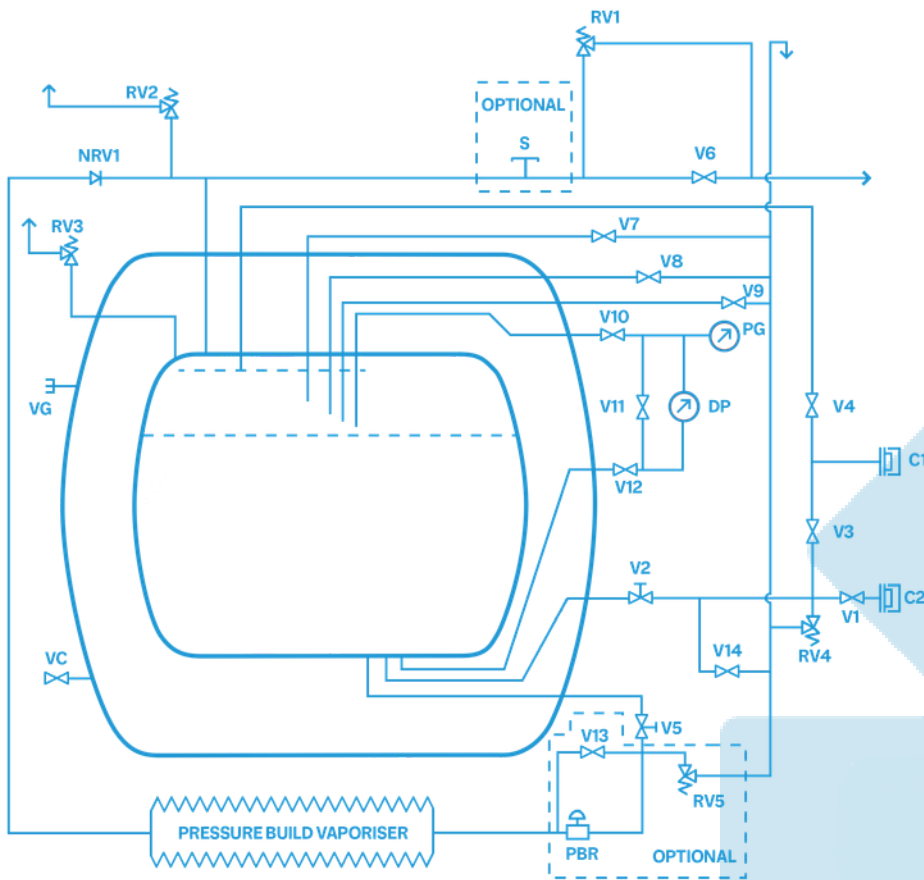
ISOVAC 20 LNG FEATURES

Custom paint specification/two-tone colour scheme available on request 

Optional Hasting vacuum check valve 

Dual trycock valves 





SPECIFICATION	ISO VAC 20 LNG 10 Bar
Product Code	9951-1110
Gross Capacity	20,000 Itr
Net Capacity	19,000 @ 95%
Pressure	10-Bar
Tare Weight (kg)	8,085
Stacking (kg)	192,000

VALVES/ PIPEWORK (LIN, LOX, LAR)

V1	Liquid decant	PBR	Pressure build regulator
V2	Liquid isolation - air actuated	RV1	Primary relief valves
V3	Bottom liquid fill	RV2	Primary relief valves
V4	Top liquid fill	RV3	Primary relief valves
V5	Pressure build globe valve - air actuated	RV4	Line relief valves
V6	Gas vent valve	RV5	Line relief valves
V7	Try-cock 1	NRV1	Non-return valves
V8	Try-cock 2	C1	Couplings to customer requirements
V9	Try-cock 3	C2	Couplings to customer requirements
V10	Gauge panel control valves	S	Sample point (optional)
V11	Gauge panel control valves	PG	Pressure gauge
V12	Gauge panel control valves	DP	Differential contents gauge
V13	Pressure build regulator bypass	VC	Vacuum pumping port
V14	Manual line blow down	VG	Vacuum Gauge