

The world leading ISO PACK offshore cryogenic tank is the product of choice for well service companies all around the World. Designed to be transported either individually or in pairs as one 20ft ISO unit, this configuration allows for the tanks to be shipped on standard container ships anywhere in the world, by the most economical method.

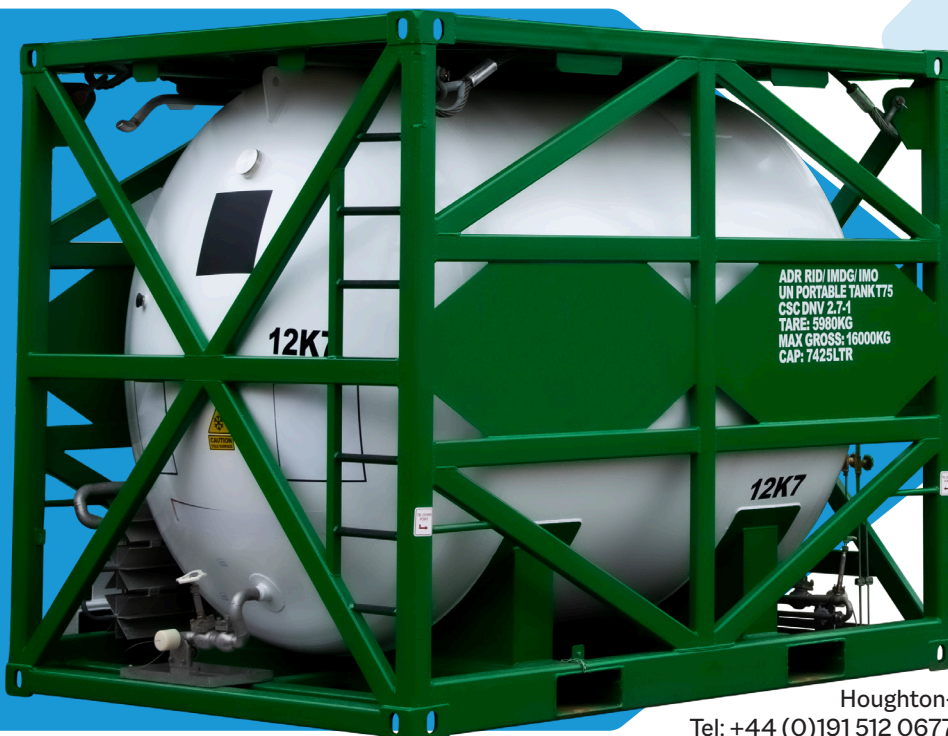
This T75 UN portable tank has approvals for road, rail & sea transport. It also has CSC, DNV 2.7-1 and ISO 10855 approvals among many other options, and is designed, manufactured and tested for storing and transporting liquid CO₂ and can often be seen on offshore supply vessels being transported to oil production platforms all over the world.

Also available with a LIN, LOX, LAR configuration.


The ISO PACK 2000 also features high vacuum super-insulation, stacking capability 9 units high to ISO 1496-3 (192,000 kg max), full set of decals (including logos where supplied by the customer), integral pressure building system, document holder and various pipe work and valve options to offer maximum versatility to the end user and operator.


MATERIALS	SPECIFICATION
Inner Shell	Stainless steel
Outer Jacket	Carbon steel (optional - stainless steel)
Skid	Carbon steel (optional - stainless steel)
Pipework	Tp. 316 stainless steel sch.10
Paint Specification	Shot blast SA 2.5, zinc rich primer 50 microns, epoxy high build 125 microns, polyurethane top coat 50 microns. Standard colour: white Custom paint colours on request
Design Approvals (s)*	EN 13530, ADR / RID, IMDG, IMO, DNV2.7-1 / ISO 10855, ISO 1496-3, CSC, US DOT, ASME VIII Div1
Temperature	Inner shell -196°C to +50°C, outer jacket -20°C to +50°C (option -40°C to +50°C) material
NER	0.4% per day
Corner Castings	ISO standard 1161 blair BLRC20100 / 20000
Couplings	NT150 as standard, custom specification on request
Roof Plates	Aluminium tread plate
Drip Tray	Stainless steel
Earth Point	Stainless steel lug
Vaporiser	Stainless steel lined aluminium starfin
Slings	Slings and shackles. Approved to all relevant codes including DNV 2.7-1 (chain slings with optional corner baskets also available)
Stacking	In accordance with ISO 1496-3 (9 High/192,000kg max)
Insulation	Vacuum and super Insulation


* Design approvals may vary depending on options and country of operation. For details, please contact Technical Department



ISOPACK 2000 FEATURES

Lower roof plate to allow stacking with slings/shackles remaining in situ 

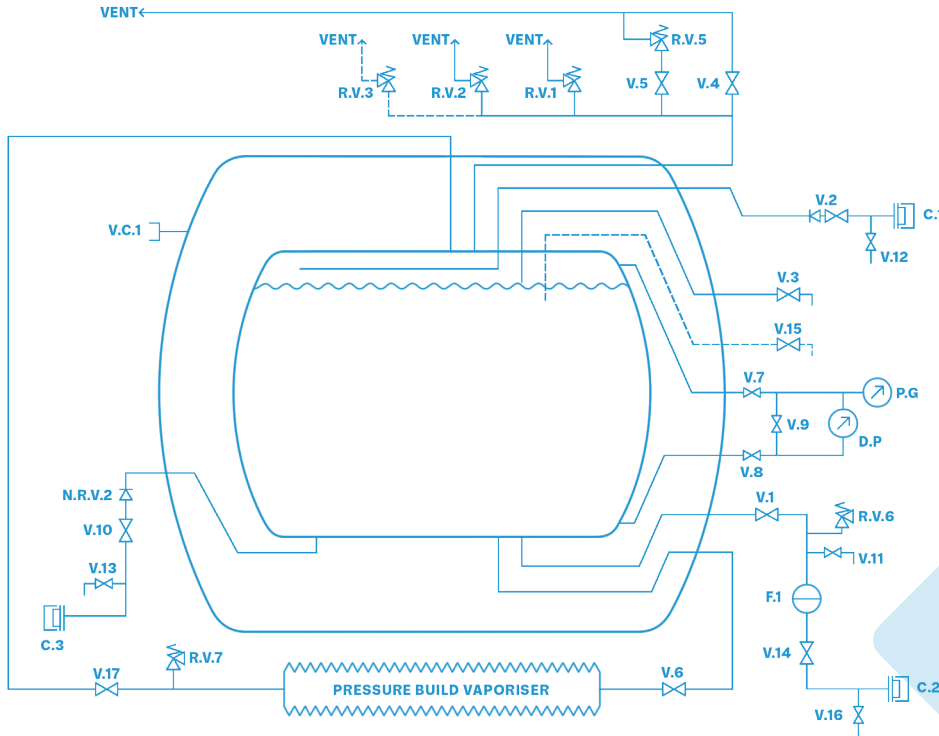
Dual trycock valves 

Fully welded frame or optional removable frame 

Optional Hasting vacuum check valve 



VALVES/PIPEWORK



VALVES/ PIPEWORK (LIN, LOX, LAR)	
V1	Liquid isolation valve
V2	Top fill valve/pump return
V3	Trycock 95%
V4	Gas vent valve
V5	Travelling valve
V6	Pressure build valve
V7	DP gauge low pressure line
V8	DP gauge high pressure line
V9	DP gauge equalising valve
V10	Rear bottom fill
V11	Line blow down valve
V12	Line blow down valve
V13	Line blow down valve
V14	Line blow down valve
V15	Secondary trycock
V16	Line blow down valve
V17	Vaporiser isolation valve
VC1	Vacuum pumping port
PG	Pressure gauge
DP	Contents gauge
C1	Top fill/pump return connection
C2	Front fill/decant connection
C3	Rear fill connection
RV1	Primary relief valve
RV2	Primary relief valve
RV5	Travelling relief valve
RV6	Line relief valve
RV7	Line relief valve
NRV1	Non return valve
NRV2	Non return valve
F1	Strainer

SPECIFICATION	ISO PACK 2000 6 Bar G ASME	ISO PACK 2000 17 Bar G ASME	ISO PACK 2000 22 Bar G ASME
Product Code	9970-2006-0	9970-2017-0	9970-2022-0
Capacity	7,700 ltr	7,200 ltr	7,200 ltr
Pressure	6 bar / 87 psi	17 bar / 246.5 psi	22 bar / 320 psi
Tare Weight	5,100 kg	6,167 kg	7,219 kg
Max Gross Weight	16,000 kg	16,000 kg	16,000 kg

