

The ISO VAC 20 LCO2 tank has been designed as a standard 20ft ISO container for the safe storage and transport of LCO2. A new frame arrangement with Blair corner castings and lockable valve protection cabinets containing the valves, gauges, vacuum check gauge connection and a separate document holder.

The ISO VAC 20 LCO2 tank can be produced with working pressures ranging from 17 to 24 Bar and can be used for the transport of LCO2. Other tank options include liquid nitrogen, argon, oxygen, LNG, Ethylene and Ethane.




This tank has approvals for road, rail and sea transport. It can also be configured to accept cryogenic transfer pumps.

The ISO VAC 20 LCO2 also features high vacuum super-insulation, stacking capability 9 units high to ISO 1496-3 (192,000kg max), full set of decals (including logos where supplied by customer), integral pressure building system, document holder and various pipe work and valve options to offer maximum versatility to end user and operator.

MATERIALS	SPECIFICATION
Inner Shell	Stainless steel
Outer Jacket	Carbon steel (optional - stainless steel)
Skid	Carbon steel (optional - stainless steel)
Pipework	Tp. 316 stainless steel sch.10
Paint Specification	Shot blast SA 316, zinc rich primer 50 microns, Epoxy high build 125 microns, polyurethane top coat 50 microns. Standard colour: white. Custom paint specification on request.
Design Approvals (s)*	EN 13530, ADR/RID, IMDG, IMO, CSC. Option - ASME'U'/CFT, AS 1210
Temperature	Inner shell -196°C to +50°C, outer jacket -20°C to +50°C (option -40°C to +50°C) material
NER	0.4% per day
Corner Castings	ISO standard 1161 blair BLRC20100 / 20000
Couplings	Blind flanges as standard. Custom specification on request.

* Design approvals may vary depending on options and country of operation. For details, please contact Technical Department

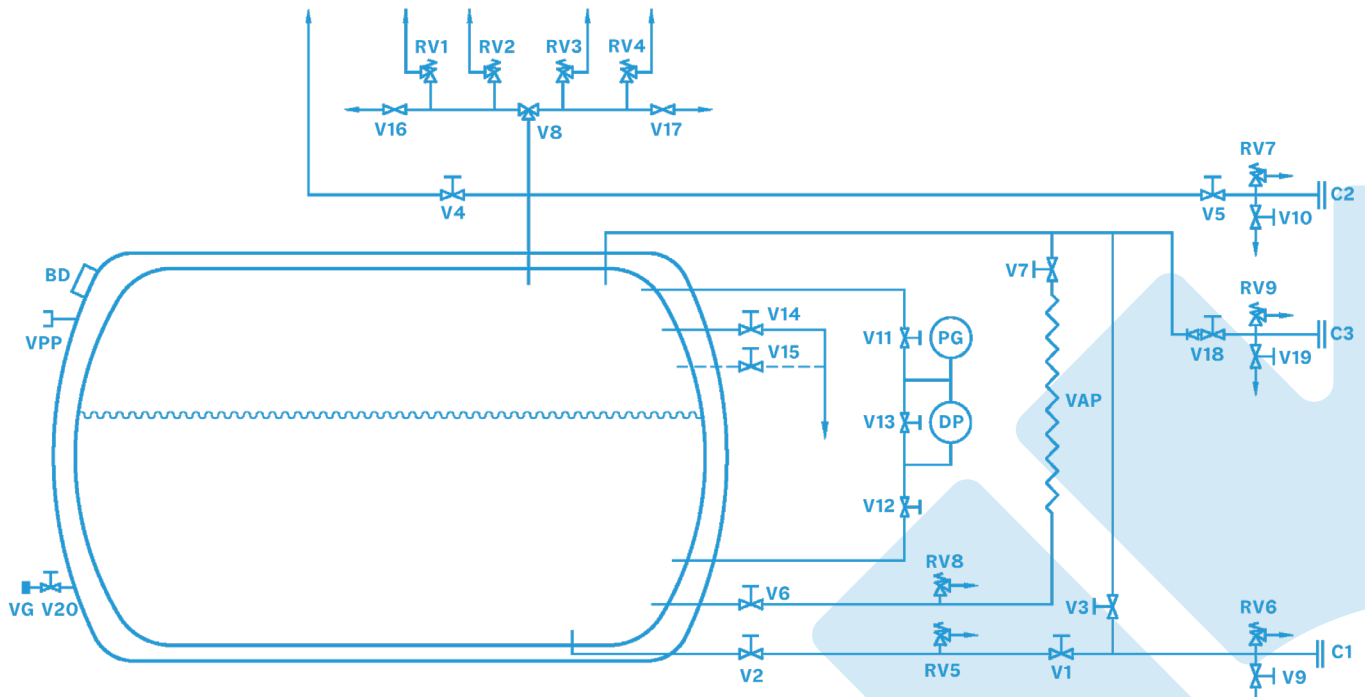
ISOVAC 20 LCO2 FEATURES

-  Custom paint specification/two-tone colour scheme available on request
-  Optional Hasting vacuum check valve
-  Dual trycock valves

SPECIFICATION	ISO VAC 20 LCO2 17 Bar	ISO VAC 20 LCO2 24 Bar
Gross Capacity	20,000 ltr	20,000 ltr
Net Capacity	19,000 @ 95%	19,000 @ 95%
Pressure	17 Bar	24 Bar
Tare Weight (kg)	7,875	9,075
Stacking (kg)	192,000	192,000



VALVES/PIPEWORK



TANK KEY

REF	DESCRIPTION	SIZE	REF	DESCRIPTION	SIZE
V1	Bottom fill/decant globe valve	2" NB	V20	Vacuum gauge isolation valve	1/8"
V2	Liquid isolation - air actuated ball valve	2" NB	DP	Differential pressure gauge	-
V3	Top fill globe valve	1 1/2" NB	PG	Pressure gauge	-
V4	Vent globe valve	2" NB	C1	Liquid fill / decant connection	2" NB
V5	Vapour return globe valve	1 1/2" NB	C2	Vapour return connection	2" NB
V6	Pressure build globe valve	1" NB	C3	Pump return connection	2" NB
V7	Pressure build return globe valve	1 1/2" NB	VAP	Pressure build vaporiser	-
V8	Divertor valve	1" NB	VPP	Vacuum pumping port	NW 40 KF
V9	Fill line blow down valve	1/2" NB	BD	Vacuum jacket blow off disc	-
V10	Vapour return blow down valve	1/2" NB	VG	Vacuum Gauge	-
V11	Low pressure valve to gauges	-	RV1	Primary relief valve	1" x 1/4"
V12	High pressure valve to gauges	-	RV2	Primary relief valve	1" x 1/4"
V13	DP gauge equalising valve	-	RV3	Primary relief valve	1" x 1/4"
V14	Try-cock valve - 95% full	1/2" NB	RV4	Primary relief valve	1" x 1/4"
V15	Secondary try-cock valve (optional)	1/2" NB	RV5	Liquid line relief valve	1/4"
V16	Divertor vent valve	6mm	RV6	Fill line relief valve	1/4"
V17	Divertor vent valve	6mm	RV7	Vapour return line relief valve	1/4"
V18	Pump return globe / check valve	1 1/2" NB	RV8	Pressure build line relief valve	1/4"
V19	Pump return globe / check valve	1/2" NB	RV9	Pump return line relief valve	1/4"

